



# Aluminum Filter Housing

## Complete with Filter Cartridge Bypass

### AVF816 Series

#### DESCRIPTION

The oil bypass filter housing was designed for sensitive equipment that requires oil flow even when the cartridge has reached its particulate or water capacity. High performance **Aquacon**<sup>®</sup> water and particulate removal filter cartridges are used with this housing.

**Aquacon**<sup>®</sup> cartridges filter out water by chemically locking it into layers of super-absorbent media. This cartridge along with the particulate cartridge effectively filters out dirt, rust and other particulates.

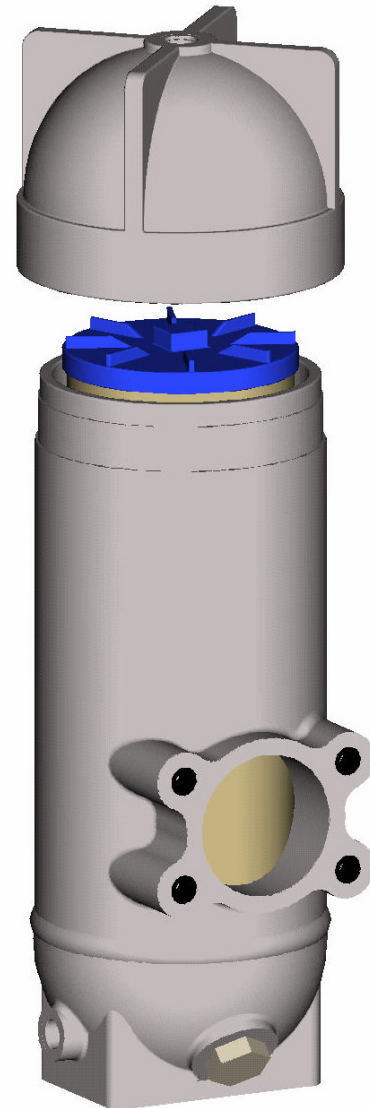
Both **Aquacon**<sup>®</sup> water and particulate cartridges for this housing have a uniquely designed oil bypass system. As the pressure drop across the cartridge reaches 65 psi (4.48 bar), the bypass valve opens and oil flow bypasses the fine cartridge media. As the oil bypasses the fine media, the oil is still filtered through a 75 micron media high capacity and high surface area pleated cartridge. This allows oil flow through the housing to the equipment even if the cartridge has reached its water or solids capacity.

#### HOUSING AND CARTRIDGE STANDARD FEATURES

- Housing aluminum construction
- Maximum working pressure 363 psi (25 Bar)
- Flow up to 32 gpm (121.1 Liters) with high viscous oil at 190 cSt (mm<sup>2</sup>/sec)
- Designed for high viscosity oil including 320 cSt (mm<sup>2</sup>/sec)
- Screw on head with no tools needed to remove or install
- Unique cartridge and housing bypass system that opens at 65psi (4.48 Bar)
- Dual pleat block cartridge:
  - 75 micron nominal high particulate capacity first layer filter media
  - 10 micron absolute second layer filter media
- Easy cartridge removal and installation

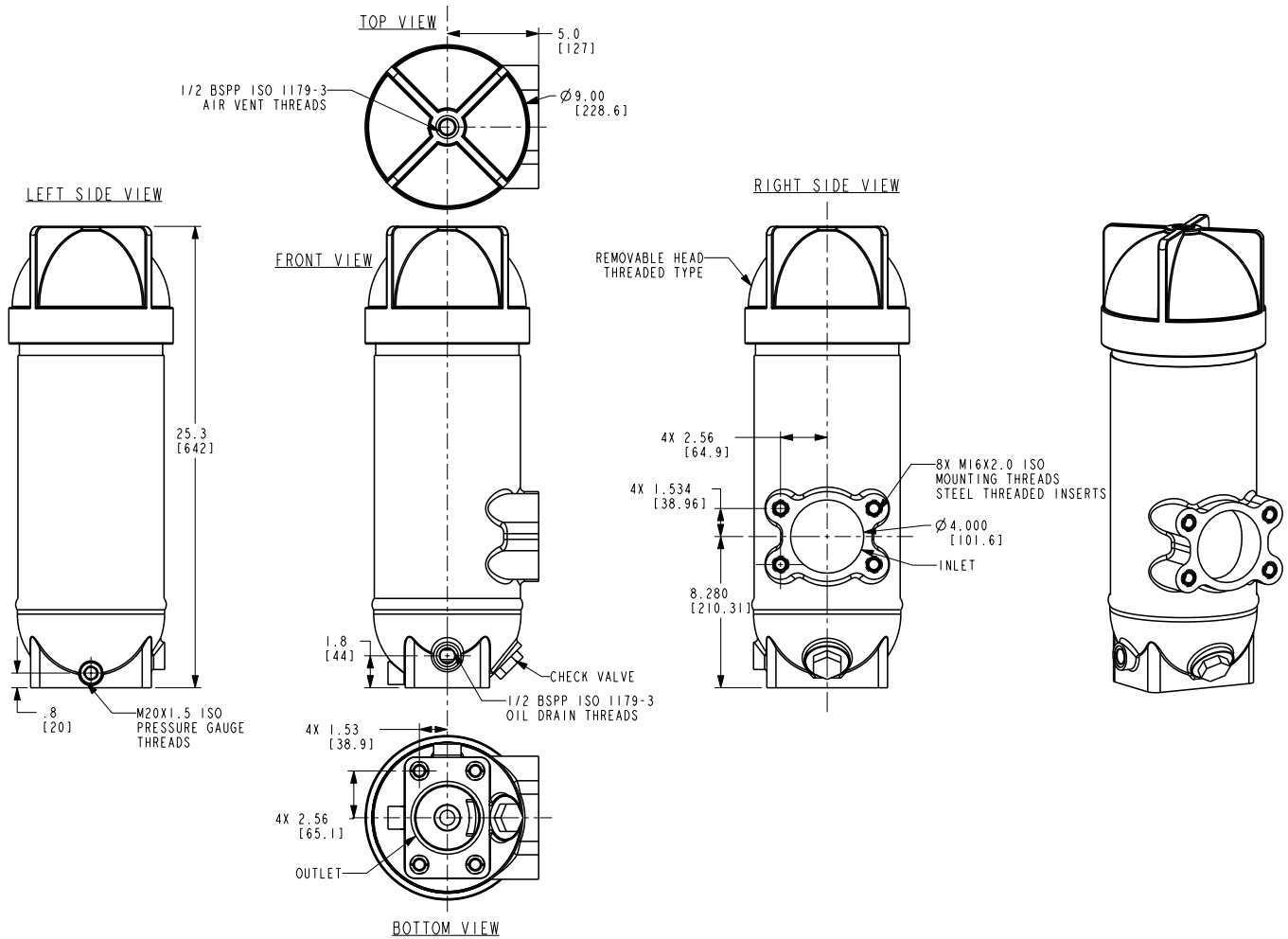
#### OPTIONAL FEATURES

- Chemical conversion corrosion protection
- Housing nameplate
- Electronic Differential Pressure Gauge



#### APPLICATIONS

- Gear oil
- Hydraulic oil
- Diesel/Biodiesel
- Turbine lube oil



## ADDITIONAL FEATURES

- 1/2" BSPP ISO 1179-3 air vent and oil drain connections
- M20 x 1.5 pressure gauge connection
- M16 x 2.0 inlet and outlet mounting connections
- Endcaps constructed with high strength fiberglass filled nylon 66
- 75 psid (5.17 Bar) cartridge collapse strength
- Buna-N head and cartridge o-rings
- Cartridge and vessel tested to:
  - ISO 3734 Flow Fatigue
  - ISO 2942 Bubble Point
  - ISO 2941 Collapse Resistance
  - ISO 4572 Multipass
  - ISO 3968 Flow Characteristics

## ORDERING INFORMATION

Velcon Part Number	Description	Quantity
AVF816	Aluminum Housing	1
FO-716PL75-2	Particulate filter cartridge	1
AC-716PL75-2	<b>Aquacon</b> <sup>®</sup> water absorbing and particulate cartridge	1
420X022	Housing head o-ring: 2-368 Buna-N	1
703X021	Electronic differential pressure gauge	1



Velcon products are sold and serviced by a world-wide representative network. To order, contact Headquarters or your LOCAL REPRESENTATIVE:

**COMPANY HEADQUARTERS:**  
 Velcon Filters, LLC  
 1210 Garden of the Gods Road  
 Colorado Springs, CO 80907-3410  
 Phone: 1.800.531.0180 / 1.719.531.5855  
 Fax: 719.531.5690  
 e-mail: vfsales@velcon.com  
 www.velcon.com

**MANUFACTURING PLANTS LOCATED AT:**  
 Colorado Springs, Colorado  
 Sylacauga, Alabama  
 Henryetta, Oklahoma

**OFFICES & AFFILIATES IN:**  
 Canada, Germany, Singapore & Spain



**Liquid Filtration  
 and Separation  
 Specialists**