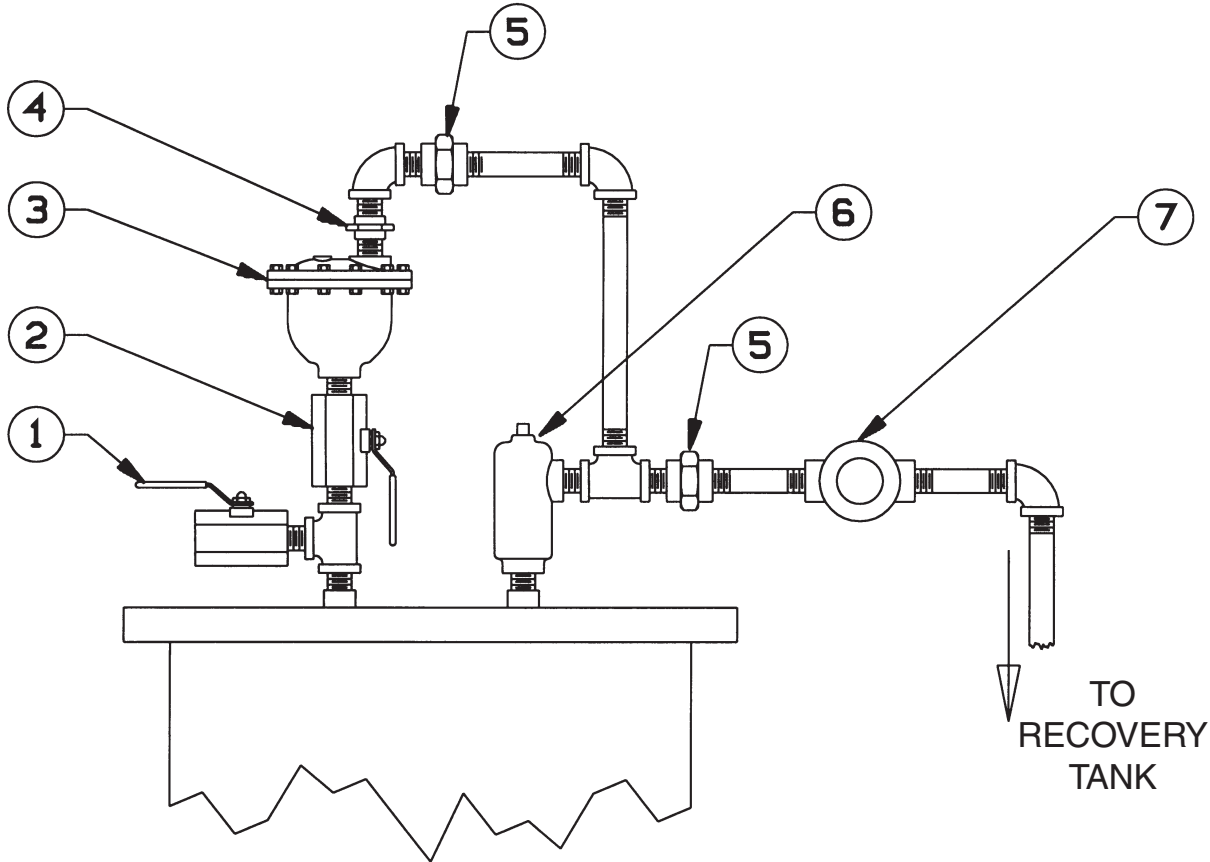




# Auto Air Eliminator & Relief Valve Hook-Up

## Typical Arrangement for Filter/Separator



1. Ball Valve – Close for normal operation. Open when filling or draining the vessel.
2. Ball Valve – (Optional) Open for normal operation. Close when air eliminator is to be removed for service.
3. Automatic Air Eliminator
4. Check Valve – Prevents air from siphoning into vessel
5. Pipe Unions
6. Pressure Relief Valve – Set at maximum working pressure (design pressure) of vessel or lower
7. Flow Indicator (Optional)

**Velcon**  
Velcon products are sold and serviced by a world-wide representative network. To order, contact Headquarters or your LOCAL REPRESENTATIVE:

**COMPANY HEADQUARTERS:**  
Velcon Filters, LLC  
1210 Garden of the Gods Road  
Colorado Springs, CO 80907-3410  
Phone: 1.800.531.0180 / 1.719.531.5855  
Fax: 719.531.5690  
e-mail: vfsales@velcon.com  
www.velcon.com

**MANUFACTURING PLANTS LOCATED AT:**  
Colorado Springs, Colorado  
Sylacauga, Alabama  
Henryetta, Oklahoma

**OFFICES AND AFFILIATES IN:**  
Canada, Germany, Singapore, & Spain



**Liquid Filtration  
and Separation  
Specialists**

Due to Velcon Filters' continuing product improvement, drawings, specifications and pictures are subject to change without notice.